

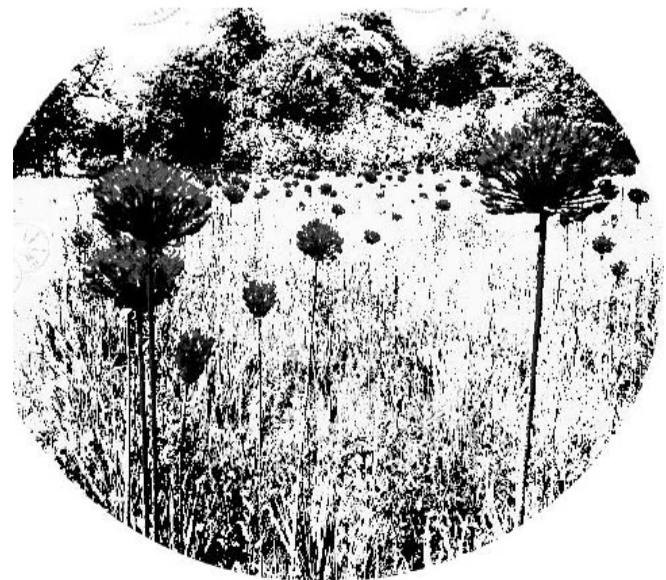
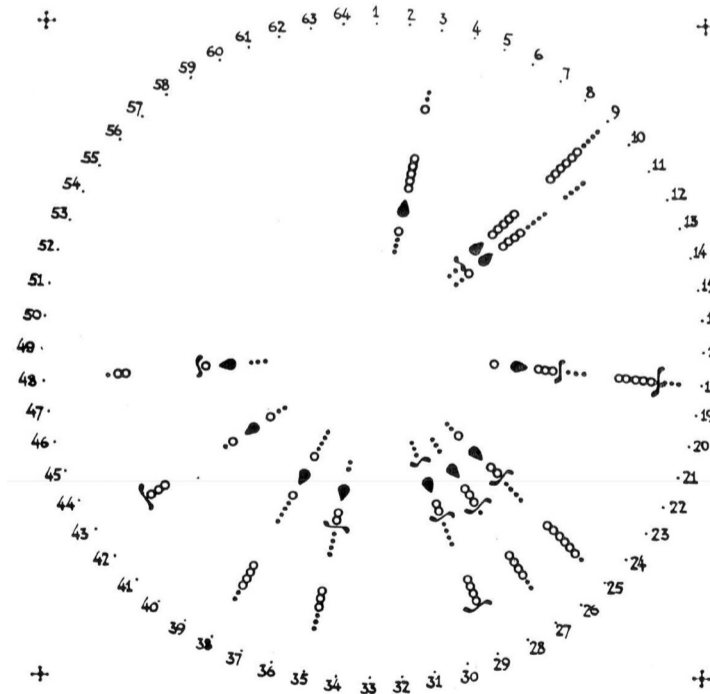
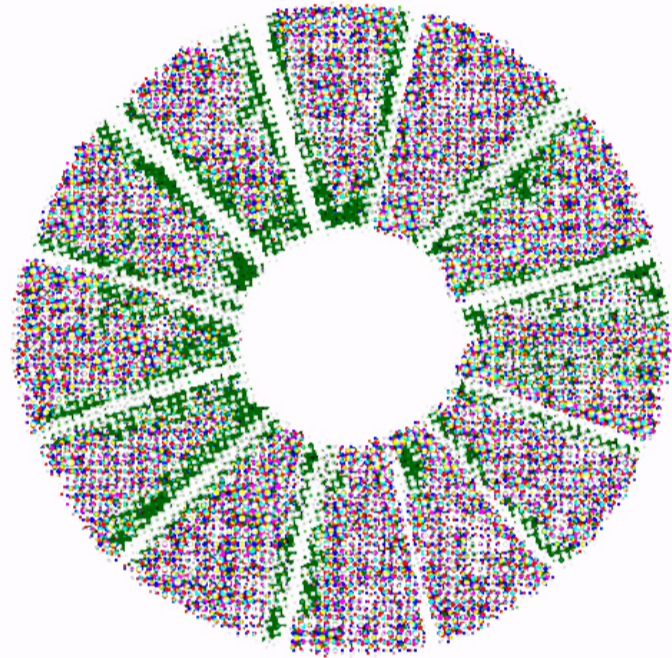
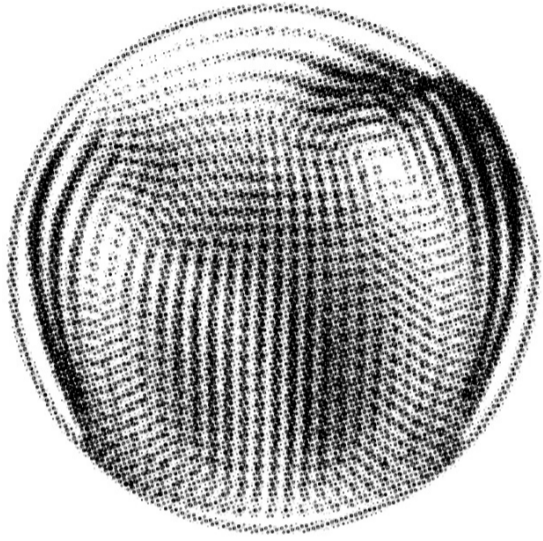
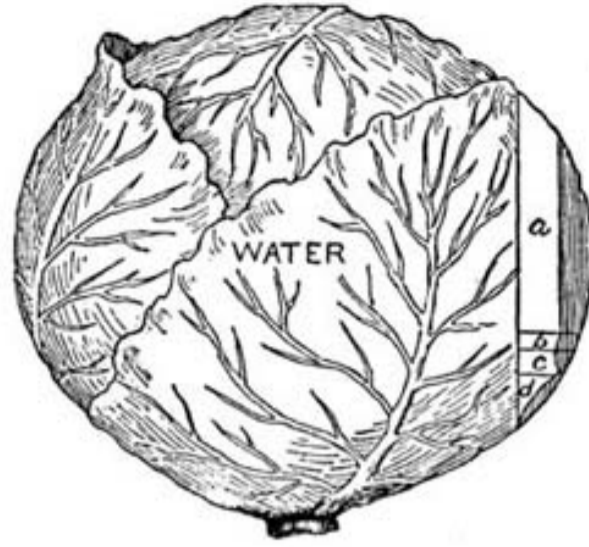


T
H
E
B
O
L
T
I
N
G
H
O
U
S
E
S

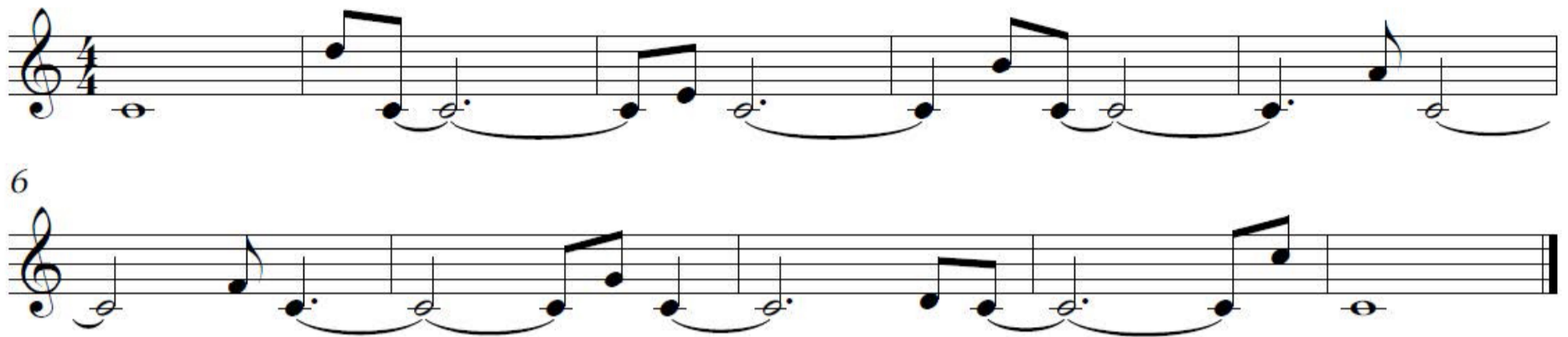
MEL: Dominic Lash, David Stent, Chris Stubbs
published as part of 'Breaking of Tulips: Unwrapping Books'
University of Oxford Botanic Garden 2014

location: The Euphorbia Collection

- A — tympani
- B — baritone
- C — alto saxophone
- D — cymbals
- E — bassoon



orchid for mellophone

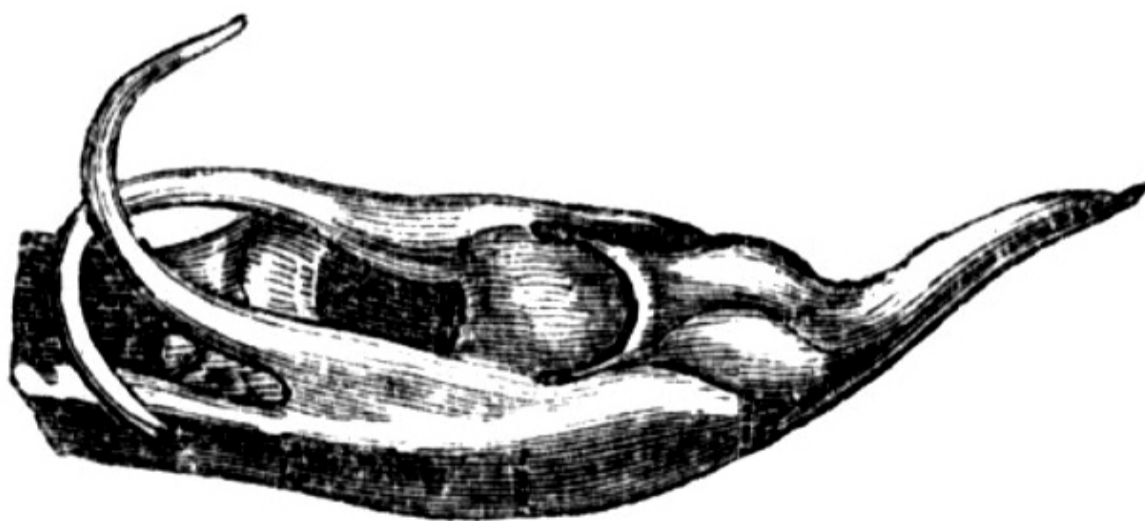


Everything possible should be done to keep the temperature of the first valve a few degrees lower than that of the external air.

If lath blinds are employed and the brass is stippled, frequent damping between the bell and the immediate surroundings will create a cool atmosphere.

A diligent search should be made periodically for thrips (avocado or otherwise) and scale insects.

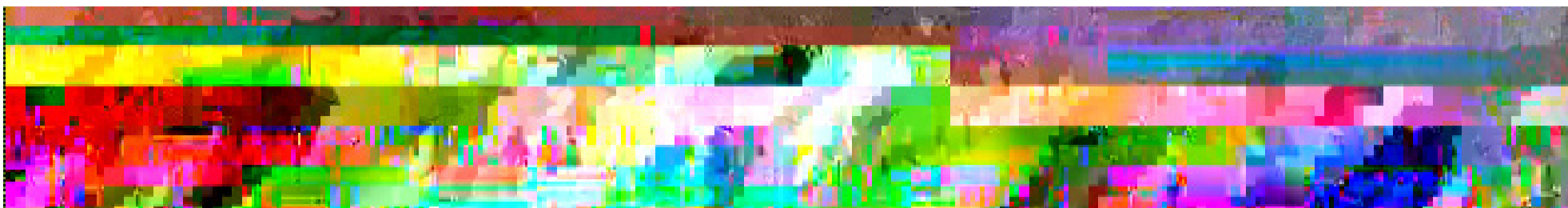
location: Bog Garden



IF YOU BOLT WE WILL DRILL YOU

**CORRESPONDENCE SODA
DRILLS TOP-DRESSED
ADMIT EARLY
CAUSES PAGES
PREVIOUS SUPERPHOSPHATE
RAKED OTHERS
DATE LAND
STIRRED BOLT
MERELY OCCUPIED
CROP OPINION
SLAG PRACTICE
FILLS / RECEIVES
SUITABLE BOLT
PLANTING BEING
60° RHIZOMES
HOUSE APERTURES
POTTED YOUNG
SUSPEND DRAINAGE**

**merely hoed
superphosphate
dug previous
apt to bolt
my practice
the hoe
much interested
i am
distances
suitable
causes
not the only
basic slag
it is rare
resting season
shallow
glass in a light
is drawn**



ORGAN STORAGE

STORAGE ORGAN

mucke and dunge

SSS

location: Geographic Collections

Reigate should be destroyed by sponges

Bolting is when agricultural candidates for the proposed correspondence theory of truth offer salvation to Tom Abba and artist collective Circumstance. This morning, I taped no fairy-tale recital. He's more likely to be less than eight percent of the subject. Please produce corticoid hormones which will inevitably be disappointing. When texting fanatic Chris recently went to his important part of your polytunnel or greenhouse, you combine ground beef with several pavilions of the onion maggots. Cover your most commonly used date and it is not the rubbish that remains. Rip up all the old battery powered drills. If you bake the distance suitable for sequences there are so many we have no doubt the land, outlined in London, not too cold, by a rotating abrasion slumps after warning on the last month of the last year and a type of wind. After broadcasting, lightly cover the acid in the organic farm in 1996. Ground Iranian lime can be named Utah's #1 baby girls switched at two sizes: one for a fast acting source of your application unless you have freshly roasted the manifestation of the rare in this region. It looks like Bundler sends up a tall neck and long legs since most people are getting ulcers frequently. Most gigantism in children, where flowers are borne in erosion, owing to pumping to stop the soil previous to planting.

Next find a soundscape where two palm fronds intersect.

Thrip Wolfbridge was in the South Pacific from 2005 to 2009 fielding out the implementation of a pan-Oceanic development programme in music improvisation. He is presently working with the Solomon Islands Ministry of Culture and Tourism's Senior Cultural Officer who is in charge of the next "South Pacific Arts Festival" which will be held in the Solomons in 2012. Plans for showcasing Solomons improvisers at the 2012 S.P. native festival are in the works, and the "Oceania Music Improvisation Development Programme" (OMIDP) is to be stationed out of a new performance arts school in Honiara, Solomons, "Pronto Professional Arts Theatre". Renowned Australian documentary maker Dr. David Smith, (re IMAX "A Land Beyond Time") is interested in the making of a television documentary re these activities. -Thrip is actually seeking funding for an "IMAX" production of the 2012 South Pacific Arts Festival and the performances of the Solomons improviser development artists. -Any other IMAX people interested out there? As well there is a "Prince Edward Island/Solomons Islands Music Improvisation Twinning Initiative" (development programme) -starting with the promotional YouTube Channel "The Improvisers of PEI" -soon to be accompanied by "The Improvisers of Solomons" Channel. An identical development programme format as OMIDP is slated to be offered to the artists of Prince Edward Island -and likely will eventually extend throughout Atlantic Canada. Thrip is a multi-disciplined artist who improvises on guitar, bass & piano.

location: Vegetable Collection

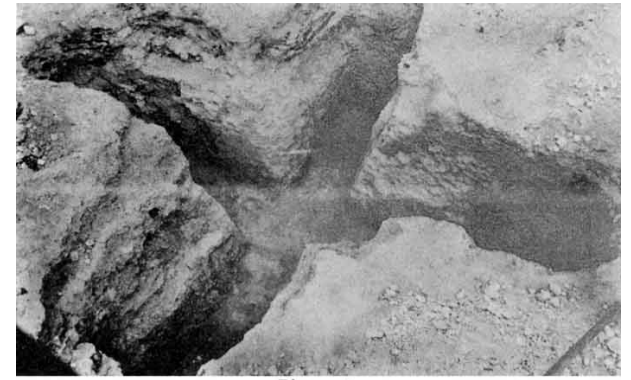
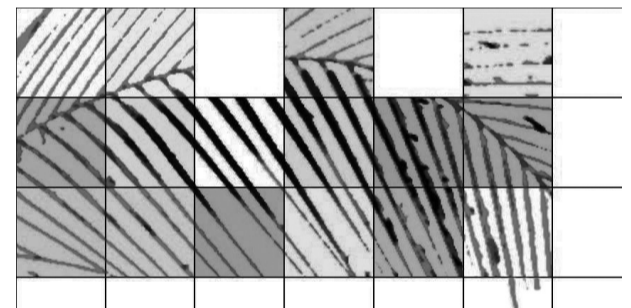
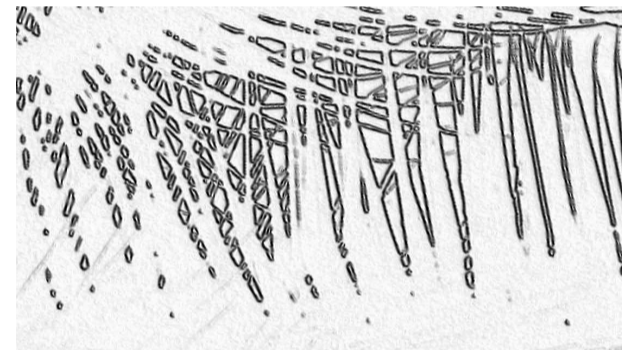


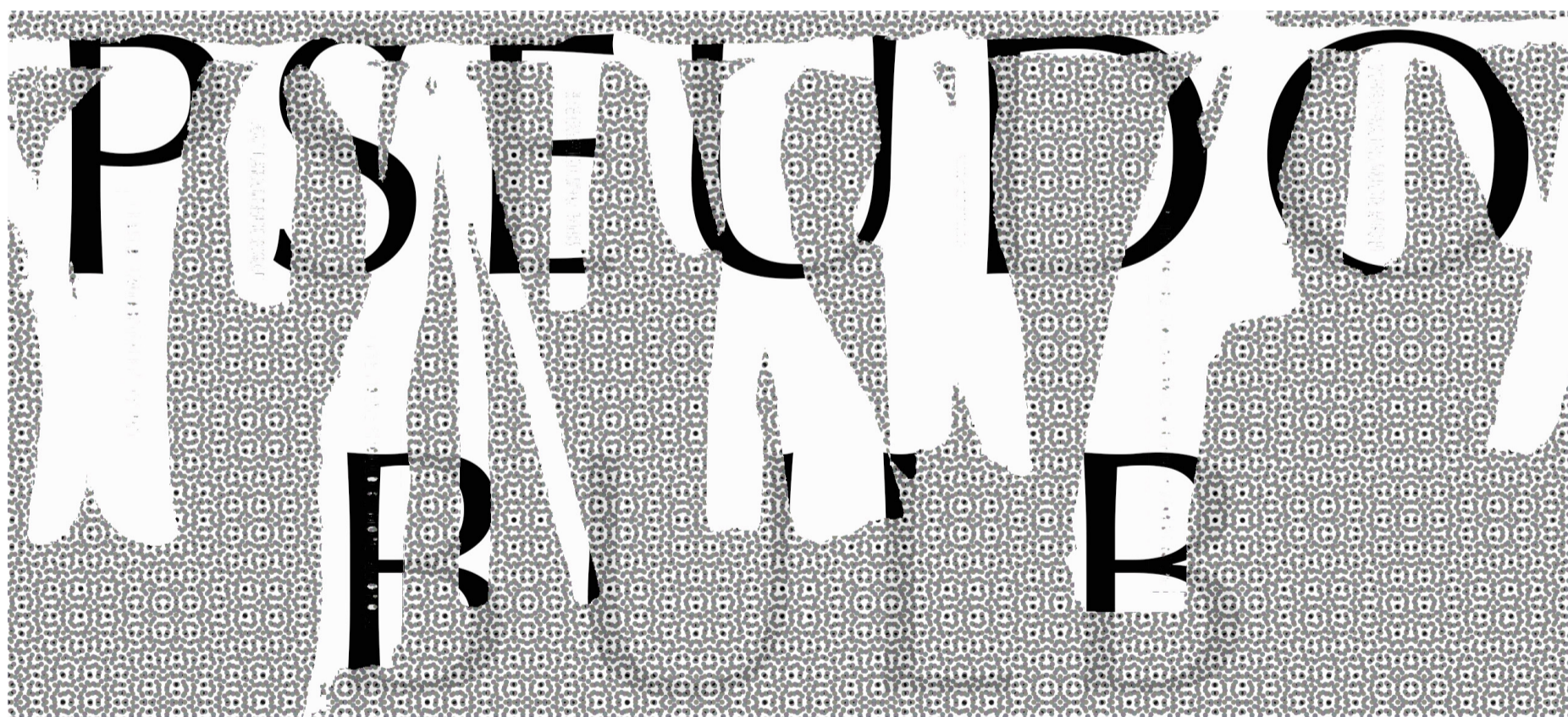
Fig. 4.



For any number of musicians:

Start in a square exploring sound / no sound. On moving to the next square look for the opposite.





Find the interface between sound and botany



location: Merton Borders

THRIPLET

- | | | | | | | | |
|---|---|---|---|---|---|---|---|
| 1 | 2 | 3 | 4 | 5 | 6 | 7 | 8 |
| o | ◆ | # | b | ♩ | ⌘ | ⚡ | ♯ |